

RiCon 80A



Power | Connect | Durable



For further information:

info@rimaster.com | +46 494 795 00 | © Rimaster AB | We reserve the right to carry out optical and technical changes

RiCon 80A

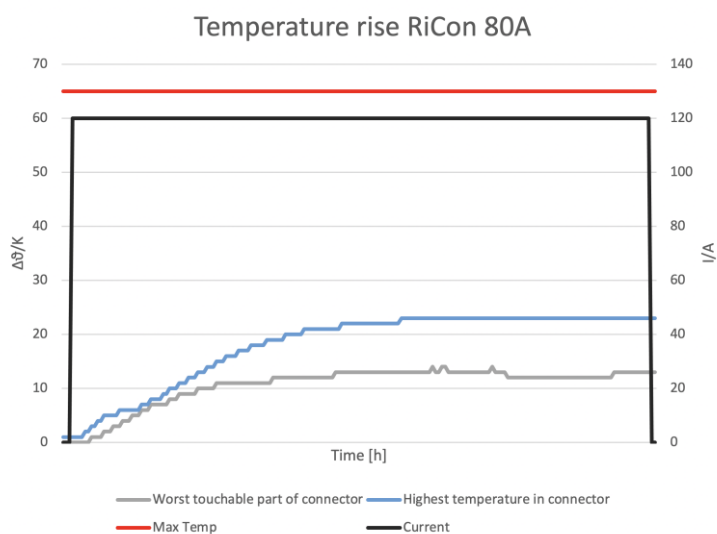
Nominal voltage	150 V DC
Current rating I	80 A acc. DIN EN1175-A1:2020
Current rating II	120 A acc. DIN EN1175-A1:2020
Temperature range	-55°C...+90°C

Standards	DIN VDE 0623-589
	DIN EN1175-A1:2020 Current rating I and II

Material housing	NORM	>PP-GF30<
Color		Black
Halogen-free		Yes
UV resistant		Natural protection
Chemical resistance	EN1175-A1:2020	Yes
Flammability	UL-94	V0 – in product test

Material contacts	Cu-ETP and minimum 6-micron silver plating.
-------------------	---

Heating of connector

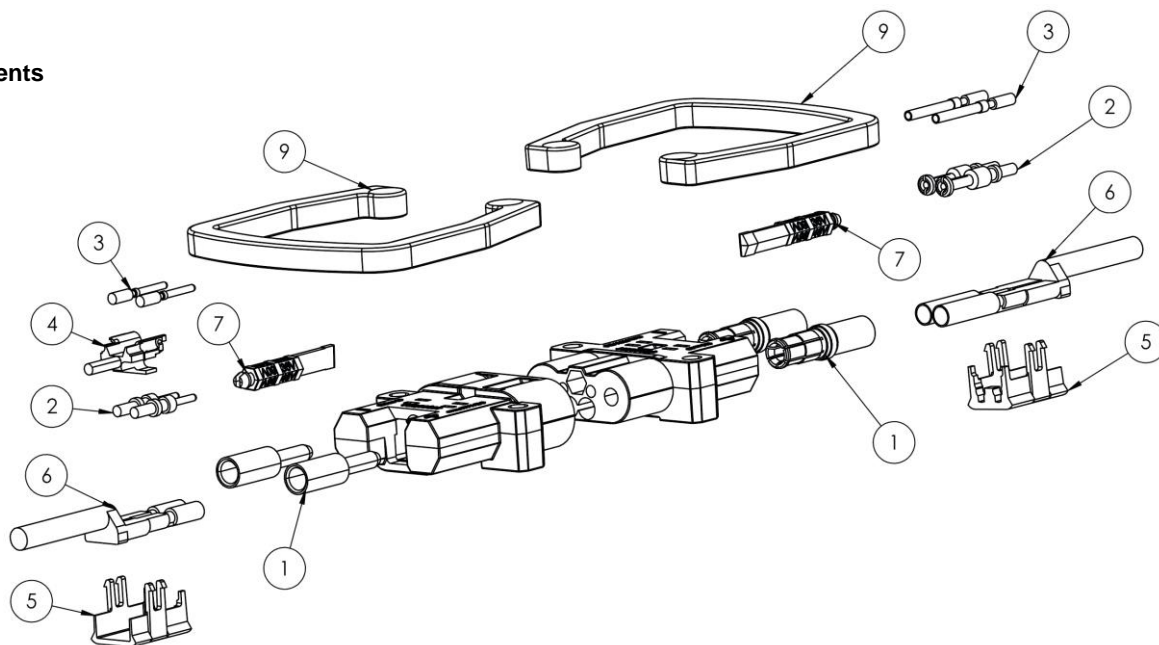


For further information:

info@rimaster.com | +46 494 795 00 | © Rimaster AB | We reserve the right to carry out optical and technical changes

RiCon 80A

Components



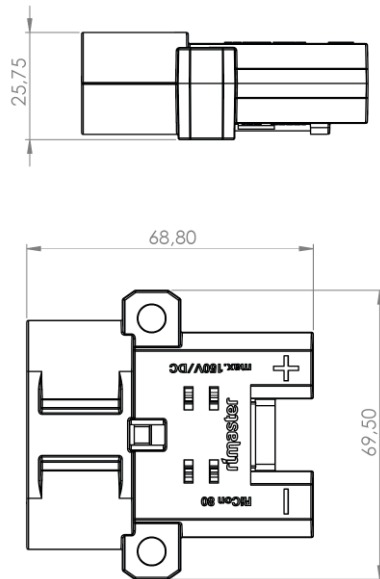
Item number	Name	80A Plug	80A Socket
1	Power contact 10 mm ²	With reducing bush	X
	Power contact 16 mm ²	X	With reducing bush
	Power contact 25 mm ²	X	X
2*	Pilot contacts	RIM74571	RIM74589
3	Auxiliary contacts	RIM74570	RIM74588
4	Insert part	RIM79263	N/A
5*	Locking part	RIM74541	RIM74541
6*	Air adapter	RIM74572	RIM74590
7	Code pin	See page 6	See page 6
8	Handle – Low profile	RIM71785	RIM71785
9	Handle – High profile	N/A	N/A
2+3+4+5	Auxiliary and Pilot kit		
5+6	Air adapter kit		
3+4+5	Auxiliary kit		
2+4+5	Pilot kit		

- * Locking part is only needed if options are mounted on the connector.
- Pilot contacts and air adapter uses the same mountings in the connector and cannot be used together

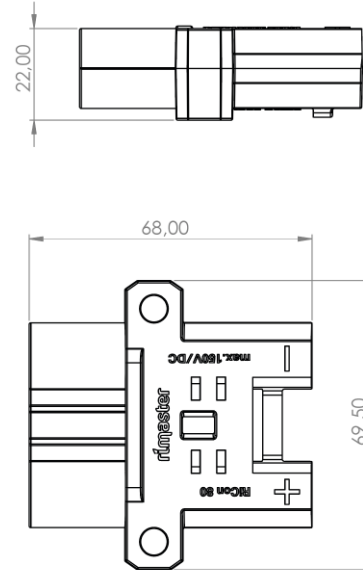
RiCon 80A

Dimensions

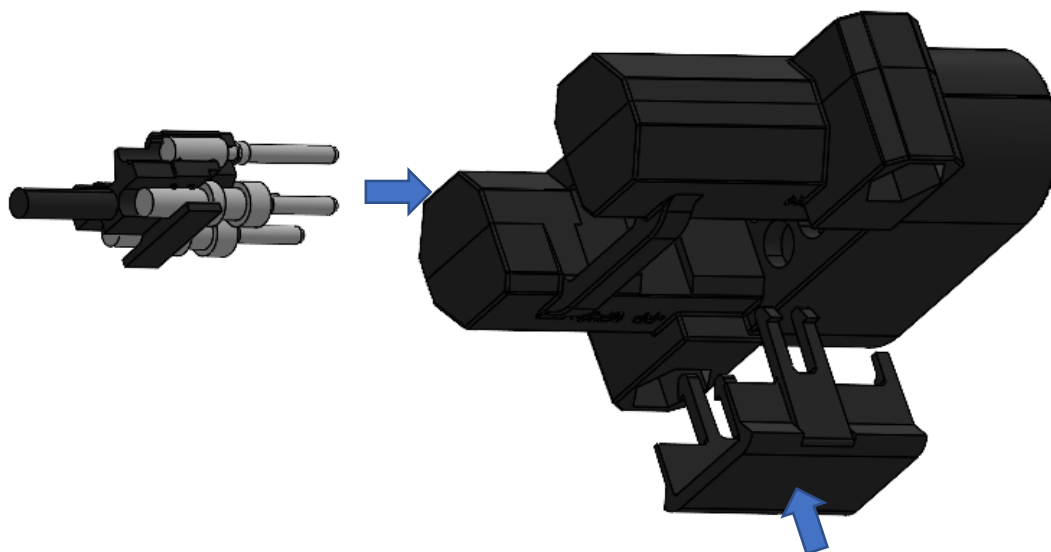
Plug connector



Socket connector



Insert part for fast and easy assembling of auxiliary and pilot lines

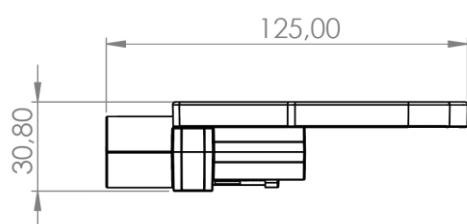


For further information:

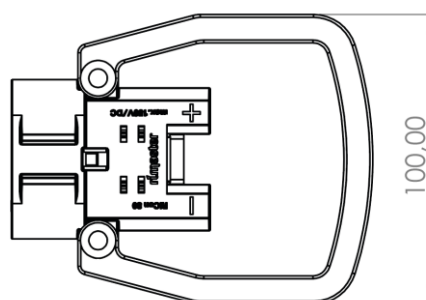
info@rimaster.com | +46 494 795 00 | © Rimaster AB | We reserve the right to carry out optical and technical changes

RiCon 80A

Plug connector

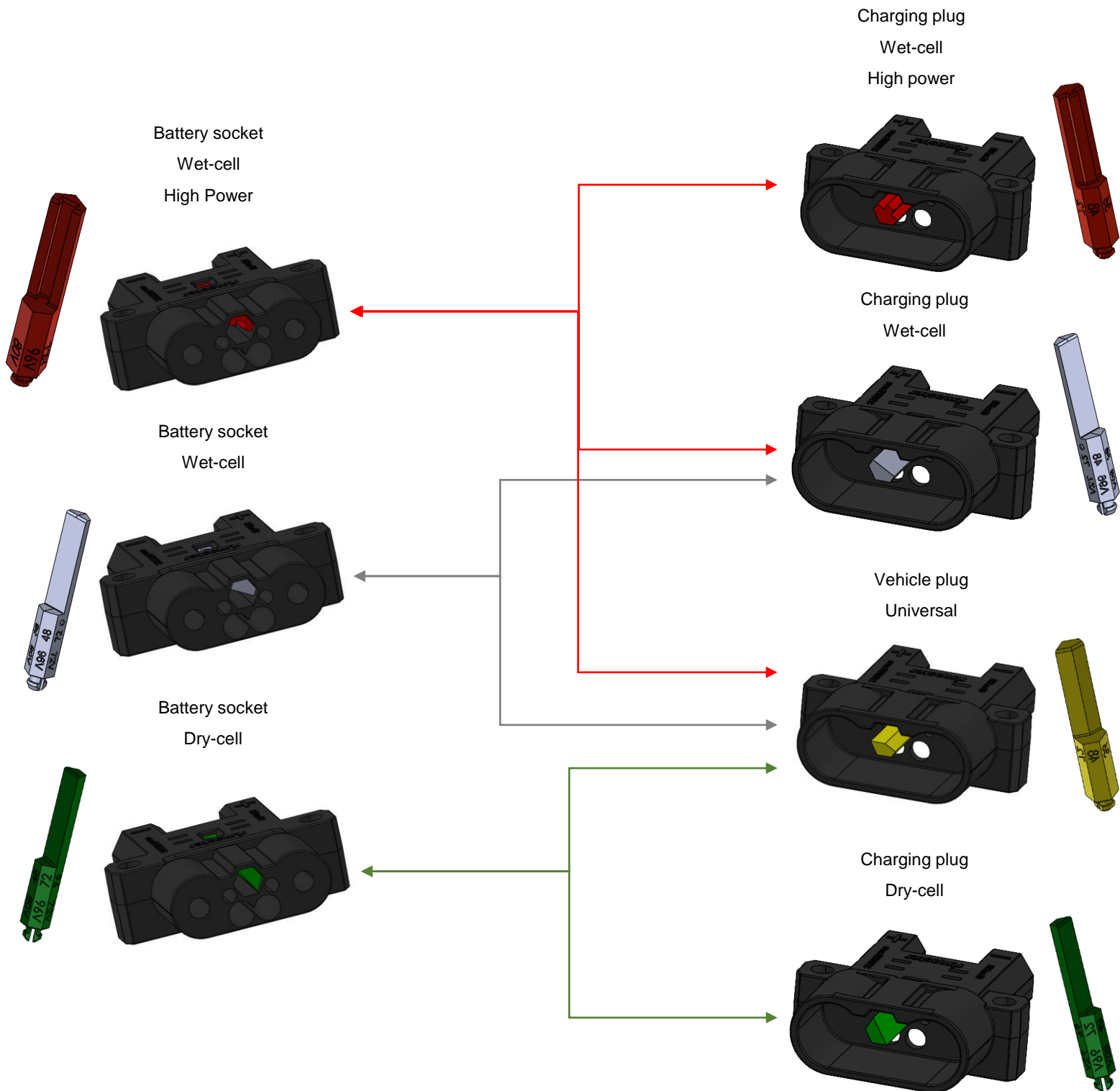


Low profile handle



RiCon 80A

Code pins



RiCon 80A

RiCon is available and verified in the following cable options:

Standard TPE isolation according to EN60332-1-2 (class V0)

Dual battery cable PVC Red/Blue

Standard HN01N2-D and HN001N2-E

RiCon 160A



Power | Connect | Durable



For further information:

info@rimaster.com | +46 494 795 00 | © Rimaster AB | We reserve the right to carry out optical and technical changes

RiCon 160A

Nominal voltage	150 V DC
Current rating I	160 A acc. DIN EN1175-A1:2020
Current rating II	250 A acc. DIN EN1175-A1:2020
Temperature range	-55°C...+90°C

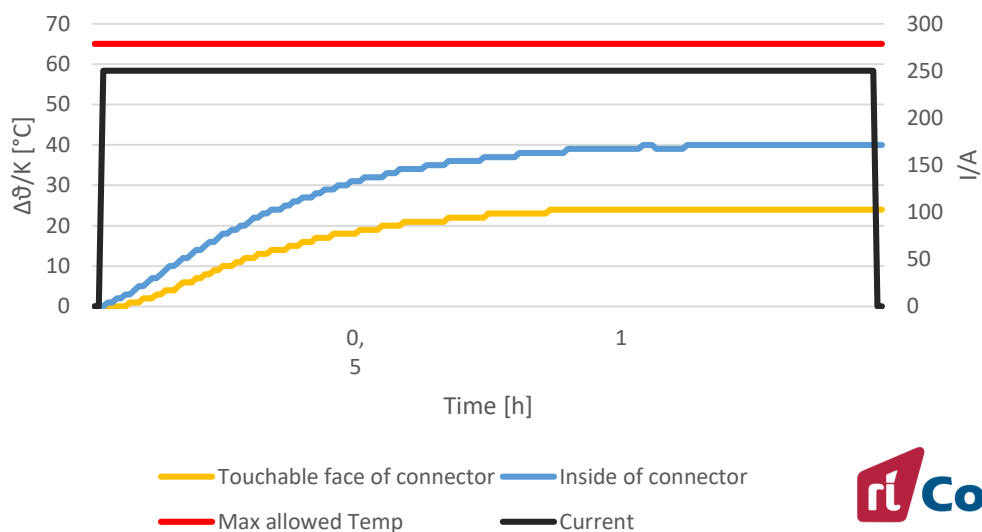
Standards	DIN VDE 0623-589
	DIN EN1175-A1:2020 Current rating I and II

Material housing	NORM	>PP-GF30<
Color		Black
Halogen-free		Yes
UV resistant		Natural protection
Chemical resistance	EN1175-A1:2020	Yes
Flammability	UL-94	V0 – in product test

Material contacts	Cu-ETP and minimum 6-micron silver plating.
-------------------	---

Heating of connector

Temperature rise 160A

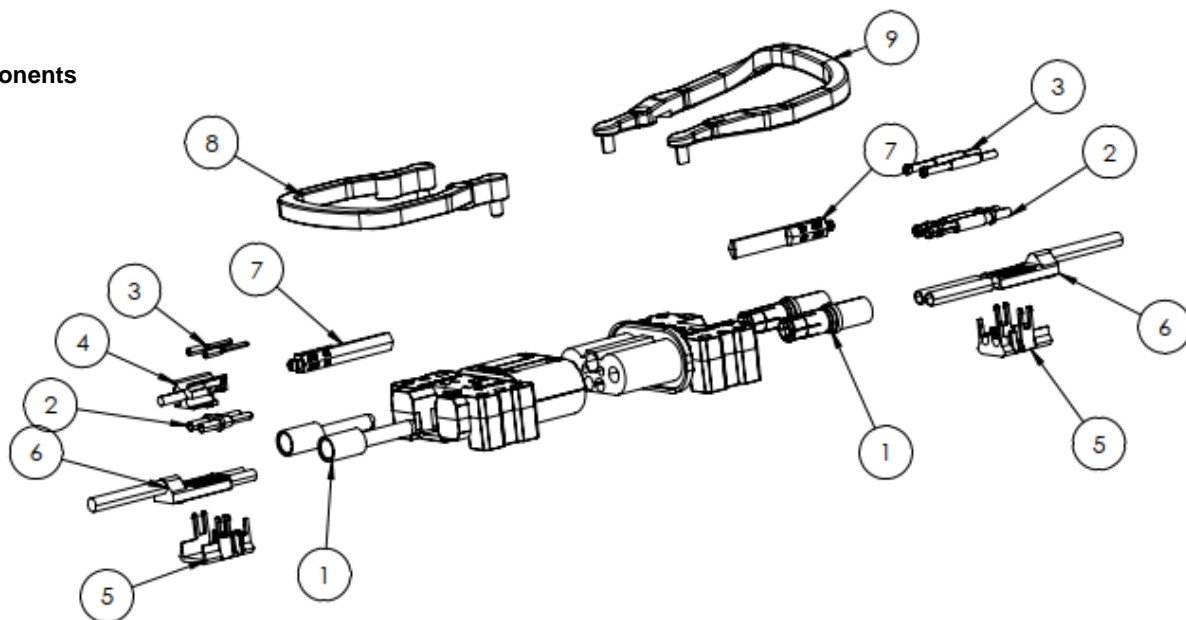


For further information:

info@rimaster.com | +46 494 795 00 | © Rimaster AB | We reserve the right to carry out optical and technical changes

RiCon 160A

Components



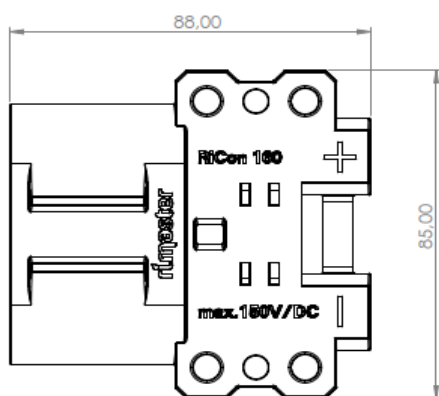
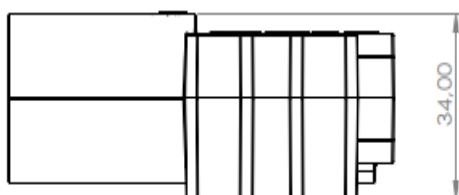
Item number	Name	160A Plug	160A Socket
1	Power contact 10 mm ²	With reducing bush	N/A
	Power contact 16 mm ²	X	N/A
	Power contact 25 mm ²	X	With reducing bush
	Power contact 35 mm ²	X	X
	Power contact 50 mm ²	X	X
2*	Pilot contacts	RIM74536	RIM74537
3	Auxiliary contacts	RIM74599	RIM74606
4	Insert part	RIM79262	N/A
5*	Locking part	RIM74540	RIM74540
6*	Air adapter	RIM74600	RIM74507
7	Code pin – Grey	See page 6	See page 6
8	Handle – Low profile	RIM71784	RIM71784
9	Handle – High profile	RIM23928	RIM23928
2+3+4+5	Auxiliary and Pilot kit		
5+6	Air adapter kit		
3+4+5	Auxiliary kit		
2+4+5	Pilot kit		

- * Locking part is only needed if options are mounted on the connector.
- Pilot contacts and air adapter uses the same mountings in the connector and cannot be used together

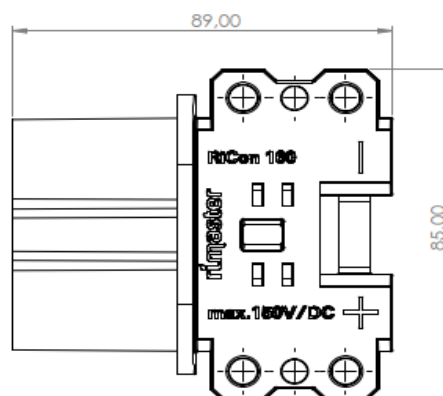
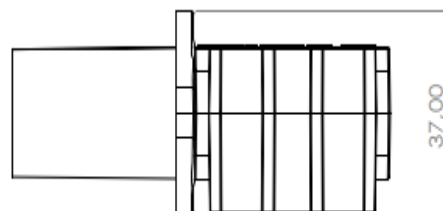
RiCon 160A

Dimensions

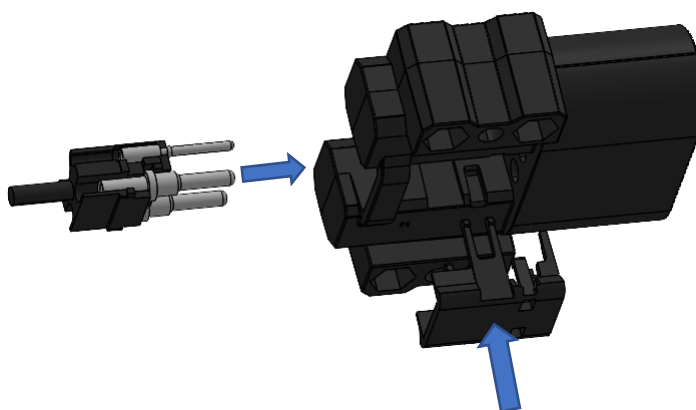
Plug connector



Socket connector

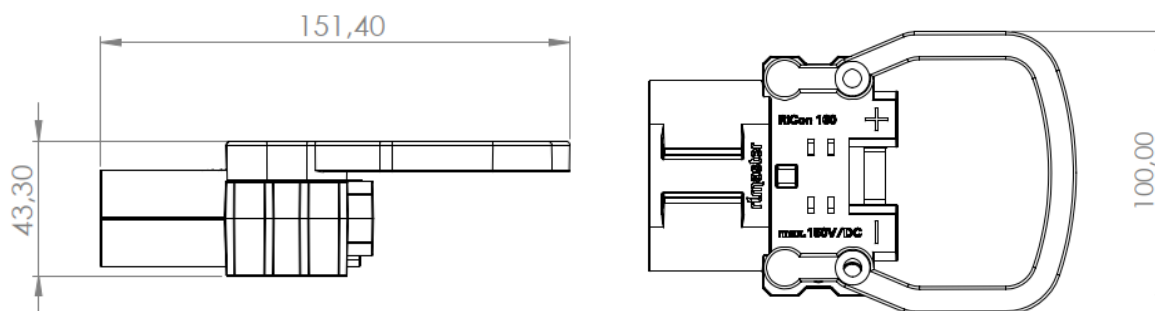


Insert part for fast and easy assembling of auxiliary and pilot lines.

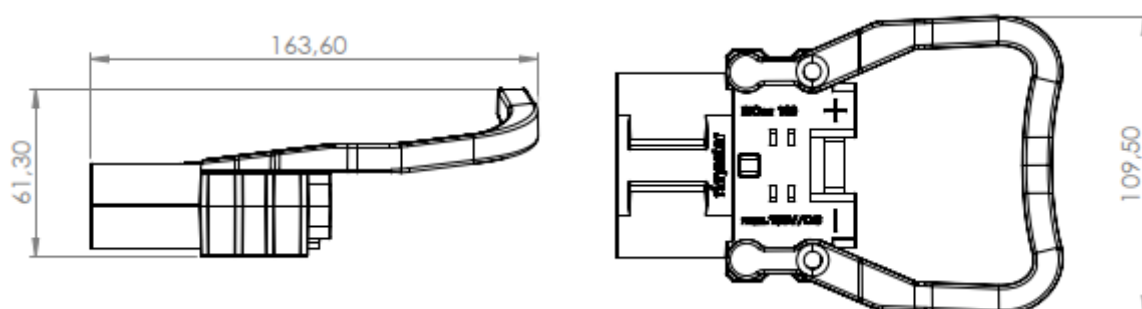


RiCon 160A

Low profile handle



High profile handle



For further information:

info@rimaster.com | +46 494 795 00 | © Rimaster AB | We reserve the right to carry out optical and technical changes

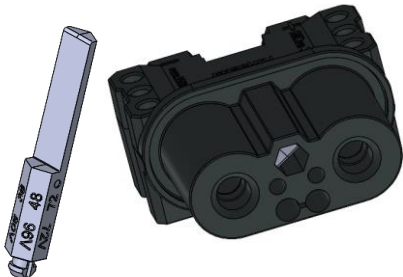
RiCon 160A

Code pins

Battery socket
Wet-cell
High Power



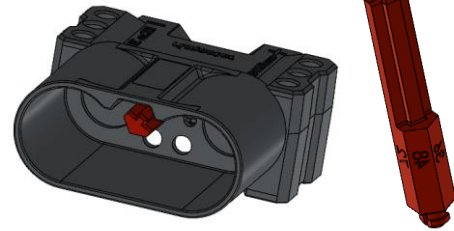
Battery socket
Wet-cell



Battery socket
Dry-cell



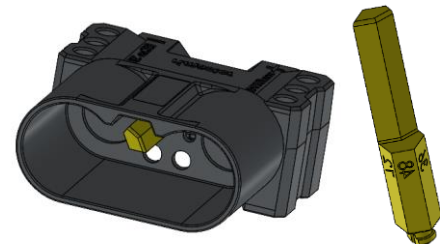
Charging plug
Wet-cell
High power



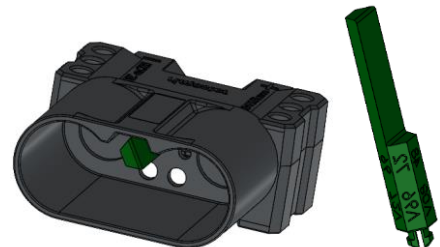
Charging plug
Wet-cell



Vehicle plug
Universal



Charging plug
Dry-cell



RiCon 160A

RiCon is available and verified in the following cable options:

Standard TPE isolation according to EN60332-1-2 (class V0)

Dual battery cable PVC Red/Blue

Standard HN01N2-D and HN001N2-E

RiCon 320A



Power | Connect | Durable



For further information:

info@rimaster.com | +46 494 795 00 | © Rimaster AB | We reserve the right to carry out optical and technical changes

RiCon 320A

Nominal voltage	150 V DC
Current rating I	320 A acc. DIN EN1175-A1:2020
Current rating II	400 A acc. DIN EN1175-A1:2020
Temperature range	-55°C...+90°C

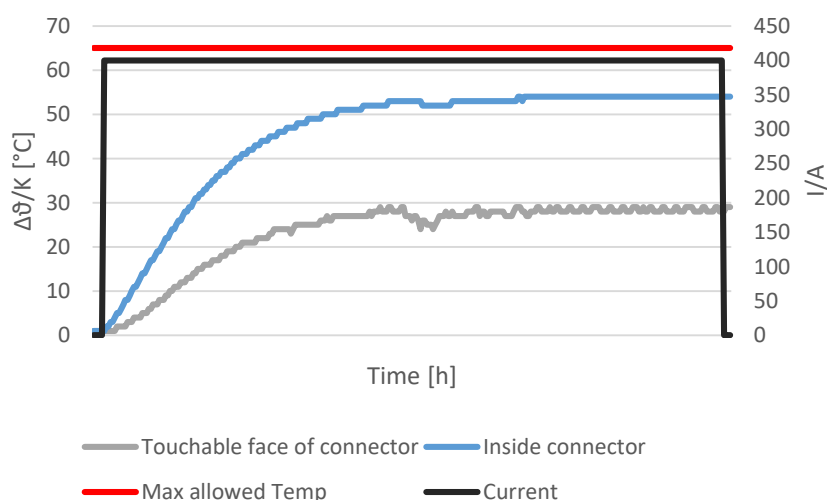
Standards	DIN VDE 0623-589
	DIN EN1175-A1:2020 Current rating I and II

Material housing	NORM	>PP-GF30<
Color		Black
Halogen-free		Yes
UV resistant		Natural protection
Chemical resistance	EN1175-A1:2020	Yes
Flammability	UL-94	V0 – in product test

Material contacts	Cu-ETP and minimum 6-micron silver plating.
-------------------	---

Heating of connector

Temperature rise 320A

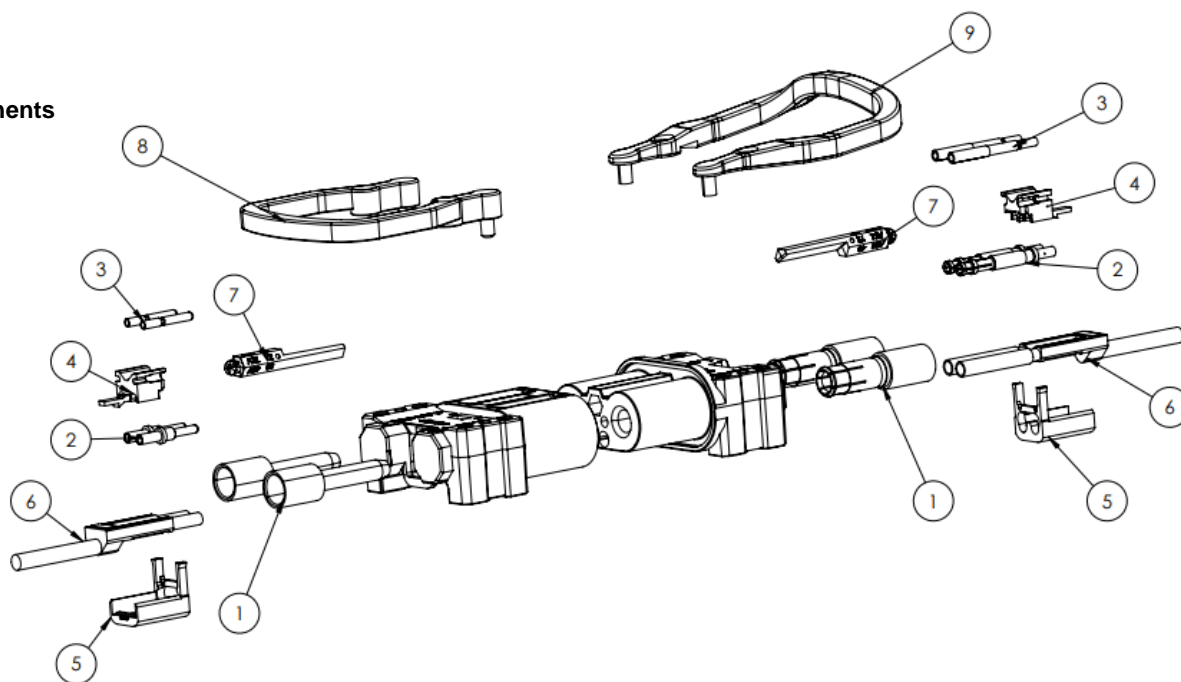


For further information:

info@rimaster.com | +46 494 795 00 | © Rimaster AB | We reserve the right to carry out optical and technical changes

RiCon 320A

Components



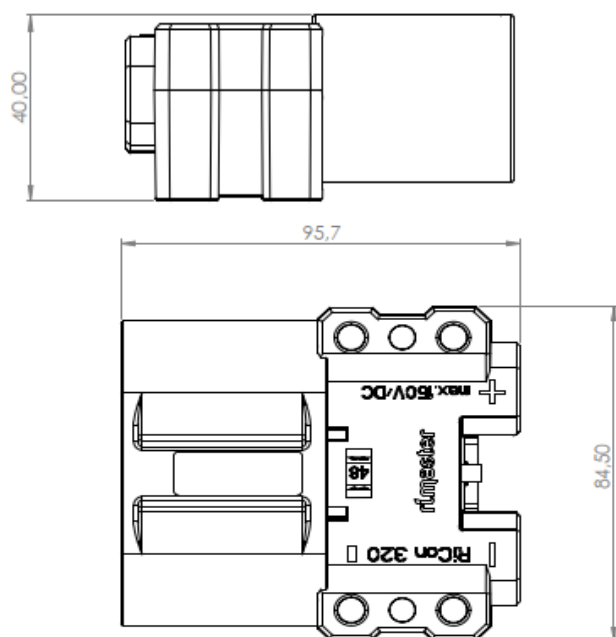
Item number	Name	320A Plug	320A Socket
1	Power contact 25 mm ²	X	N/A
	Power contact 35 mm ²	X	With reducing bushing
	Power contact 50 mm ²	X	X
	Power contact 70 mm ²	X	X
	Power contact 95 mm ²	X	X
2*	Pilot contacts	RIM74537	RIM74536
3	Auxiliary contacts	RIM74534	RIM74535
4	Insert part	RIM79261	N/A
5*	Locking part	RIM74539	RIM74539
6*	Air adapter	RIM74532	RIM74533
7	Code pin	See page 6	See page 6
8	Handle – Low profile	RIM71784	RIM71784
9	Handle – High profile	RIM23928	RIM23928
2+3+4+5	Auxiliary and Pilot kit		
5+6	Air adapter kit		
3+4+5	Auxiliary kit		
2+4+5	Pilot kit		

- * Locking part is only needed if options are mounted on the connector.
- Pilot contacts and air adapter uses the same mountings in the connector and cannot be used together

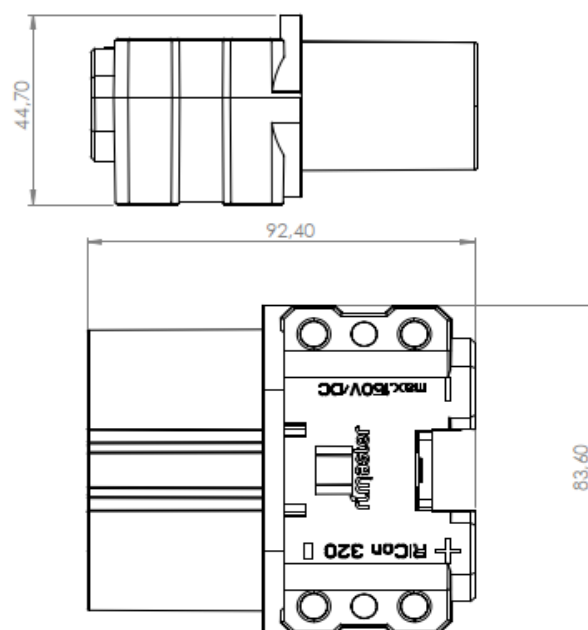
RiCon 320A

Dimensions

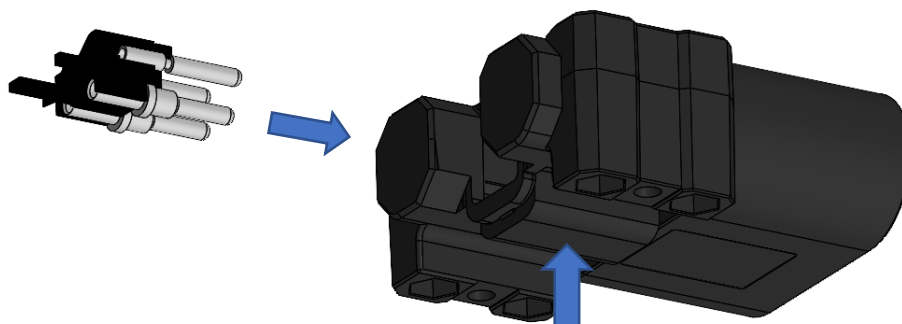
Plug connector



Socket connector

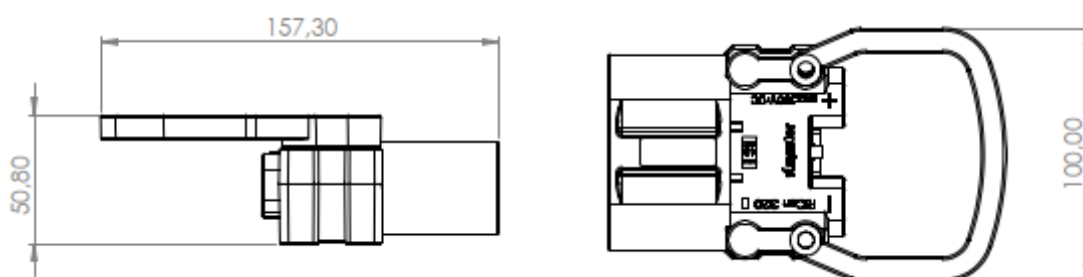


Insert part for fast and easy assembling of auxiliary and pilot lines.

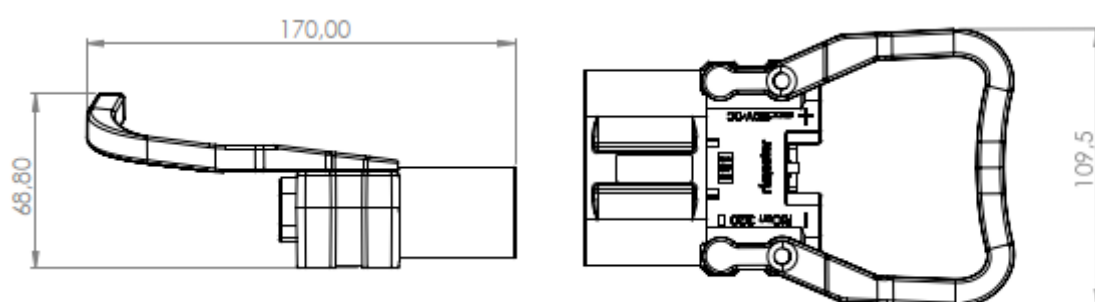


RiCon 320A

Low profile handle

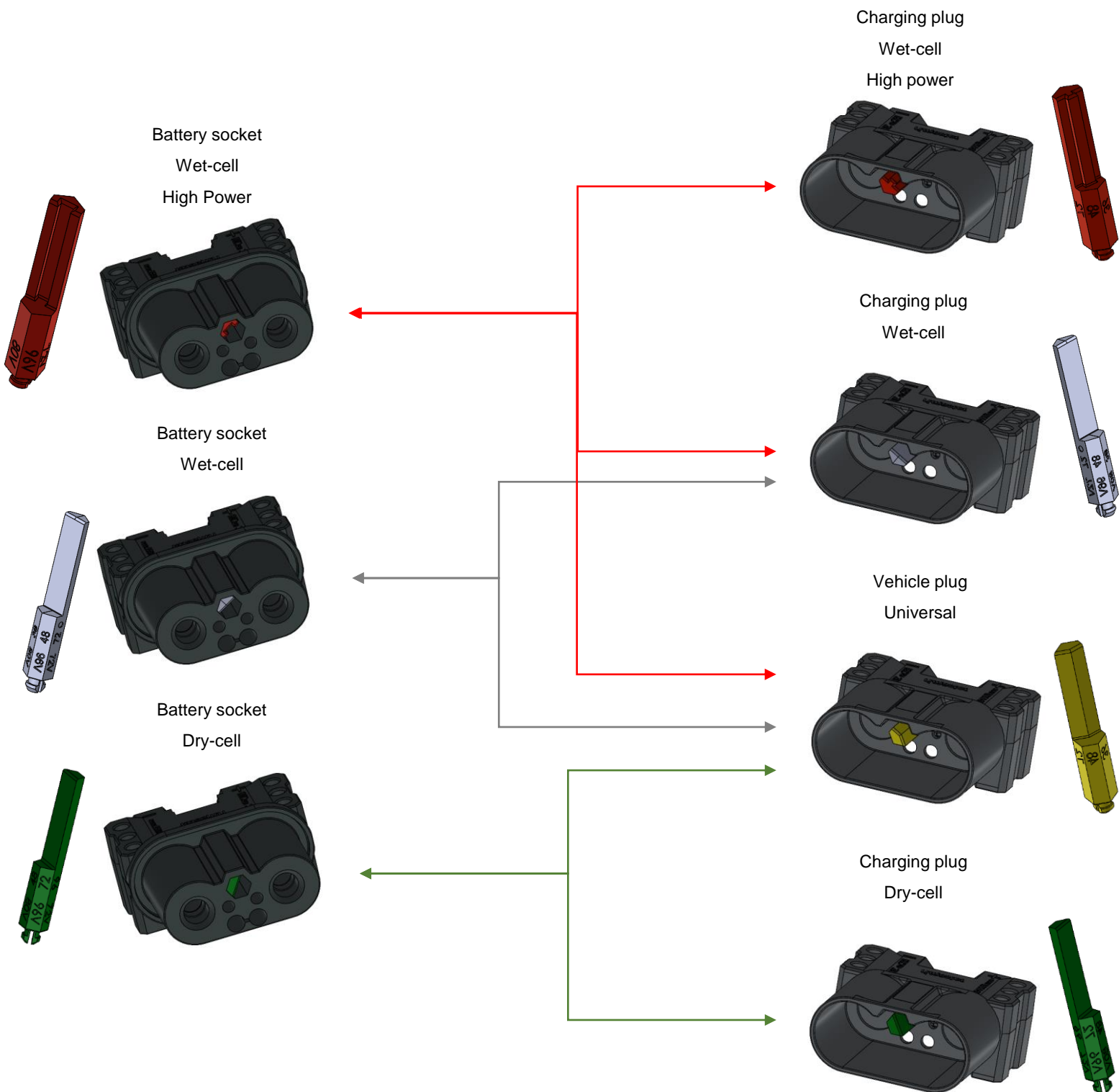


High profile handle



RiCon 320A

Code pins



For further information:

info@rimaster.com | +46 494 795 00 | © Rimaster AB | We reserve the right to carry out optical and technical changes

RiCon 320A

RiCon is available and verified in the following cable options:

Standard TPE isolation according to EN60332-1-2 (class V0)

Dual battery cable PVC Red/Blue

Standard HN01N2-D and HN001N2-E

For further information:

info@rimaster.com | +46 494 795 00 | © Rimaster AB | We reserve the right to carry out optical and technical changes